

**PRO SERIES**



# FR1500-ID

RS485 slave reader  
Reads fingerprint, RFID & password

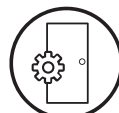
FR1500-ID is a stylish single-gang flush-mounted slave fingerprint reader for InBio and InBio Pro panels, only.

## FEATURES



### Sleek Stylish Form Factor:

Flush-mounted stainless steel enclosure with slim and attractive design is ideal for both indoor & outdoor installations where aesthetics are very important.



### Easy Operation:

Once a user places their finger on the FR1500-ID their fingerprint is subsequently matched by the InBio (or InBioPro) panel. FR1500-ID also provides Visual indication for acceptance/rejection of the fingerprint (and/or prox card) of the users.



### Communication:

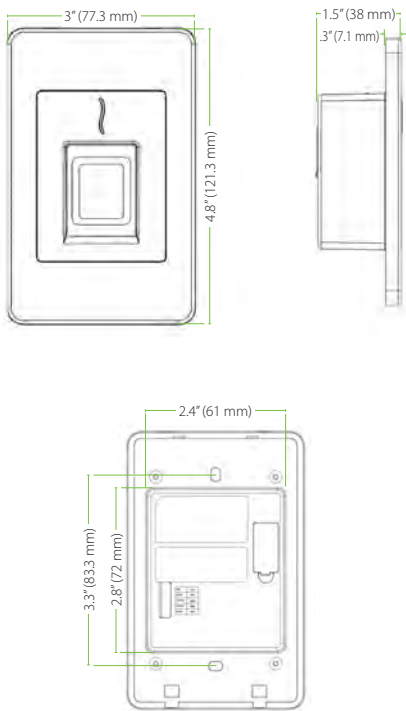
FR1500-ID connects only via RS485 to InBio & InBioPro panels. FR1500-ID does not support Wiegand.



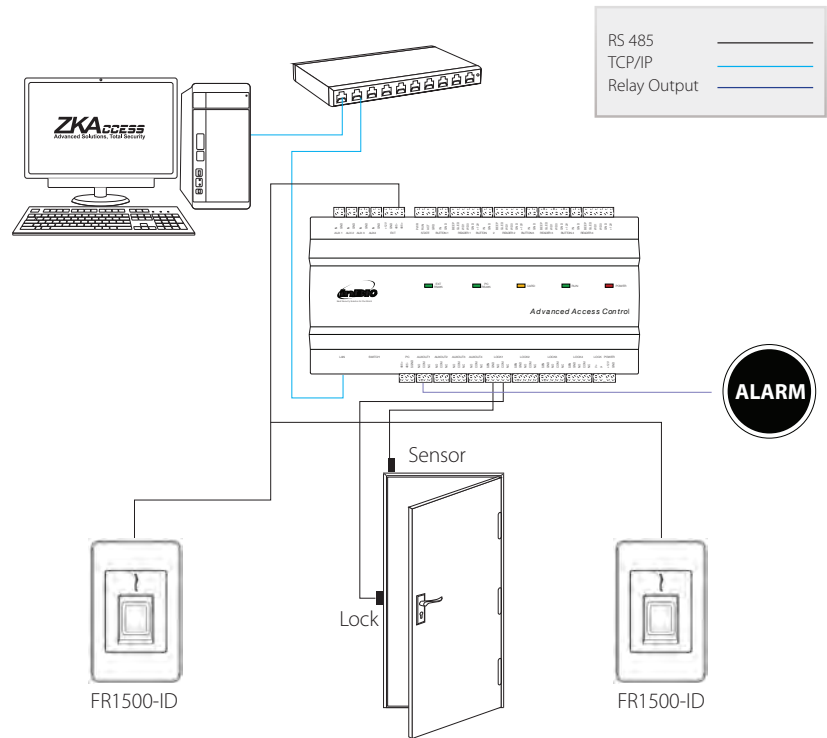
### Standard Reader:

- SilkID fingerprint sensor
- Built-in ZKAccess prox card reader
- Options for HID

## DIMENSIONS



## INSTALLATION W/INBIO (INBIO PRO) PANEL



## SPECIFICATIONS

Communication	RS485 only to InBio & InBioPro panels
Power	12V DC, 1A
Operating Temperature	14°F to 113°F
Operating Humidity	20% to 80%
Water Rating	IP65
Optional Card Reader	Milfare card, HID 125 kHz card, iClass card
Dimensions	(L) 4.8in x (W) 3in x (D) 0.3in exposed; (D) 1.5in behind wall

### Part Numbers

FR1500-ID: with ZKAccess ID card reader  
 FR1500-Mifare: with Mifare card reader  
 FR1500-HID: with HID 125 kHz card reader  
 FR1500-iClass: with HID iClass card reader

### ZKTeco USA

1600 Union Hill Rd., Alpharetta GA 30005

Phone: (862) 505 - 2101 • Fax: (862) 204 - 5906 • sales@zktcouusa.com • www.zktcouusa.com

© Copyright 2020. ZKTeco Inc. ZKTeco Logo and ZKTeco USA Logo have registered trademarks of ZKTeco or a related company.

All other product and company names mentioned are used for identification purposes only and maybe trademarks of their respective owners.

All specifications are subject to change without notice. All rights reserved.